

Loyola University Chicago Center for Science and Math Education

Cultivating the Learning Conditions for Student Sensemaking: Tools for Reflective Practice

Thursday, November 7, 2024



Sarah Stults, [sstults@luc.edu](mailto:ssults@luc.edu)
Kayla Cherry, kcherry@luc.edu



LOYOLA
UNIVERSITY CHICAGO

Loyola University Chicago

The Center for Science and Math Education (CSME) advances transformative, research-based approaches to STEM education, with the aim of enhancing STEM learning in PK-12 and higher education.



Kayla Cherry
Science Instructional Coach
kcherry@luc.edu



Sarah Stults
Science Instructional Coach
sstults@luc.edu

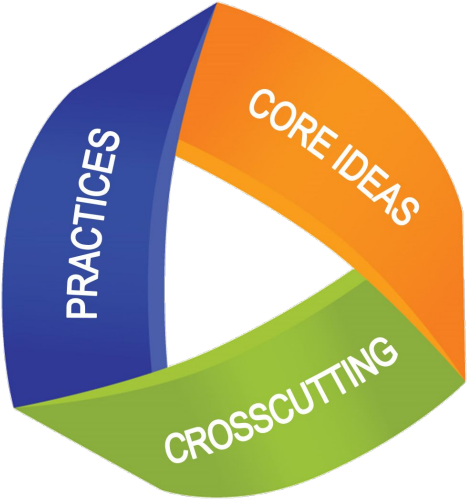
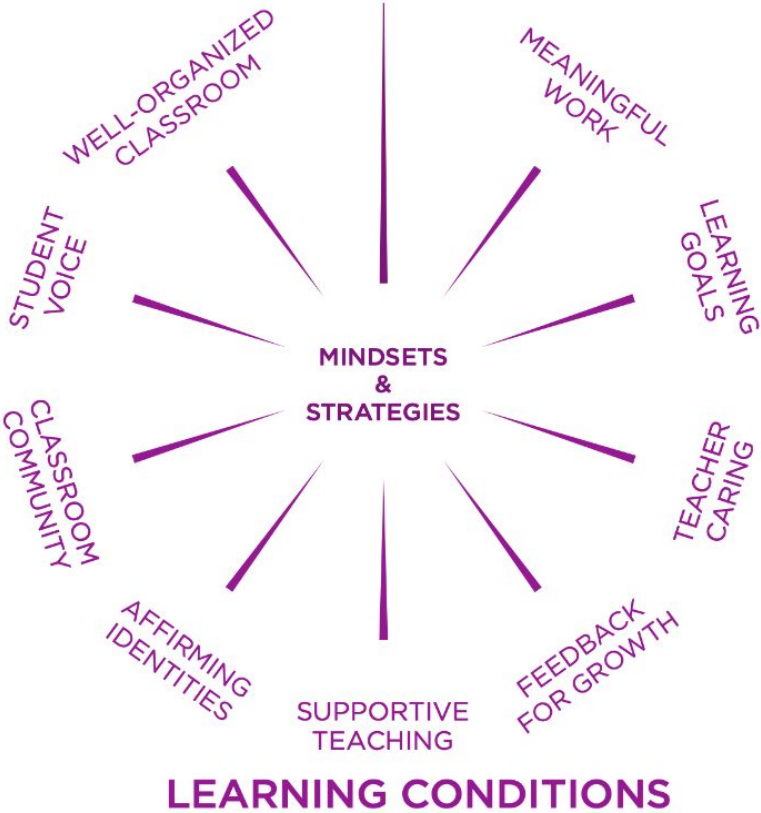
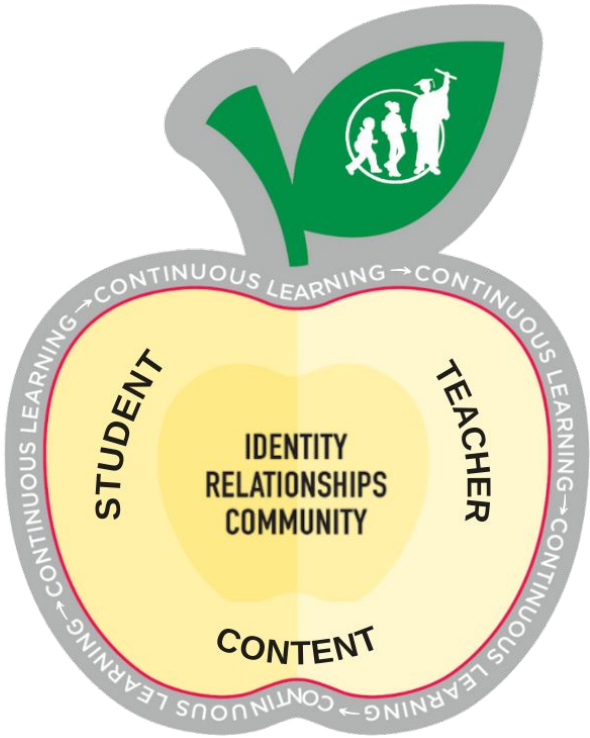


Goals and Outcomes

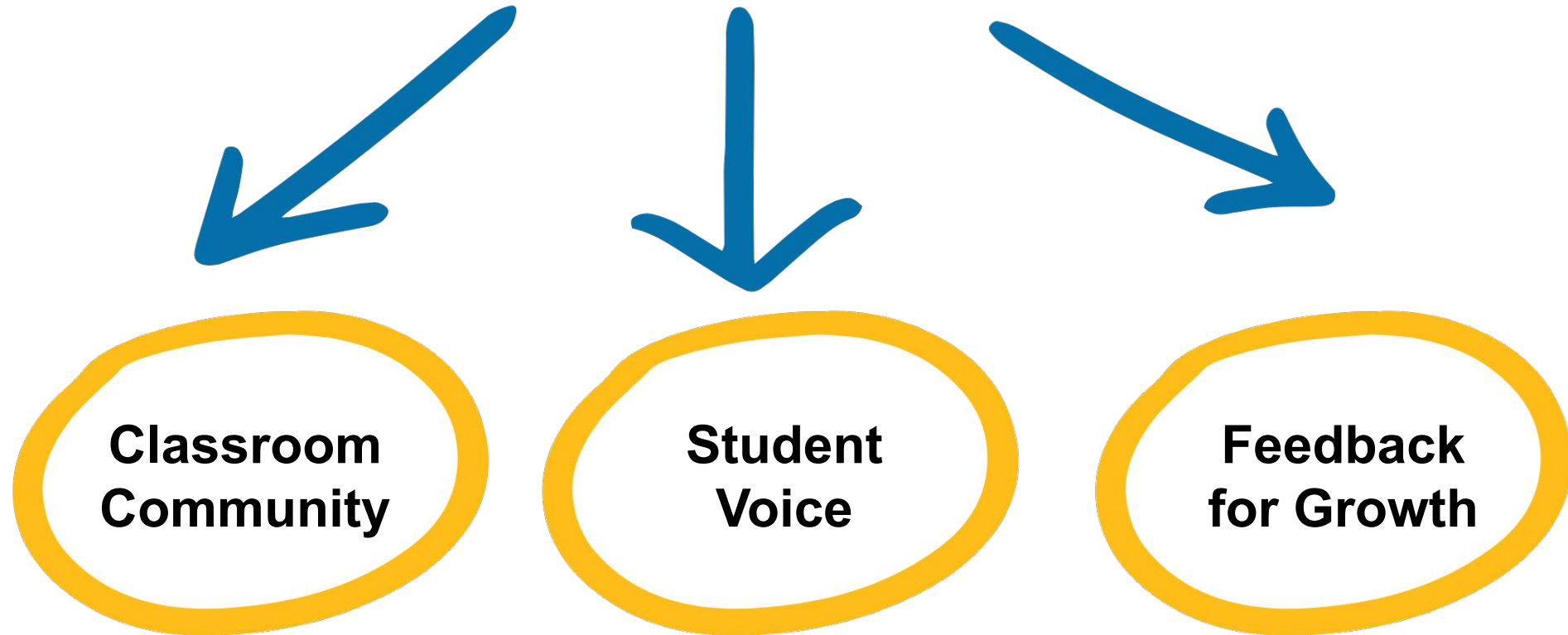
You will:

- journey through a reflective protocol that builds teachers' capacity to cultivate conditions for learning.
- observe teachers' classroom video clips or written reflections at each learning cycle phase, pausing to discuss potential next steps and areas of opportunity for student sensemaking.

Overview of the Learning Conditions



Learning Conditions: Mindsets & Strategies



**Sense of community
and mutual support
among classmates**

**Nature and quality of
teacher feedback to
improve student work**

**Opportunities for and
responsiveness to
student ideas and input**

Introducing our Focal Teachers



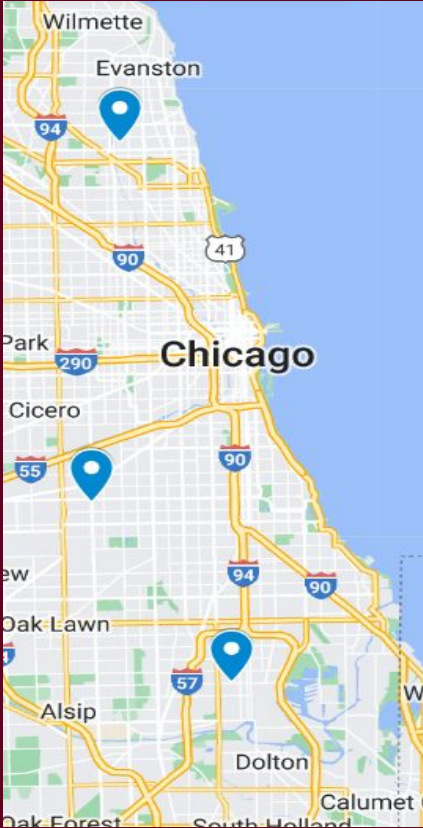
Leah



Lucie



Reginald



The Learning Cycle Action Plan (LCAP)

Reflect on the process and outcomes.

Analyze outcomes. Identify trends, successes, needs and priorities.

Implement and collect data.



Understand Intention and need

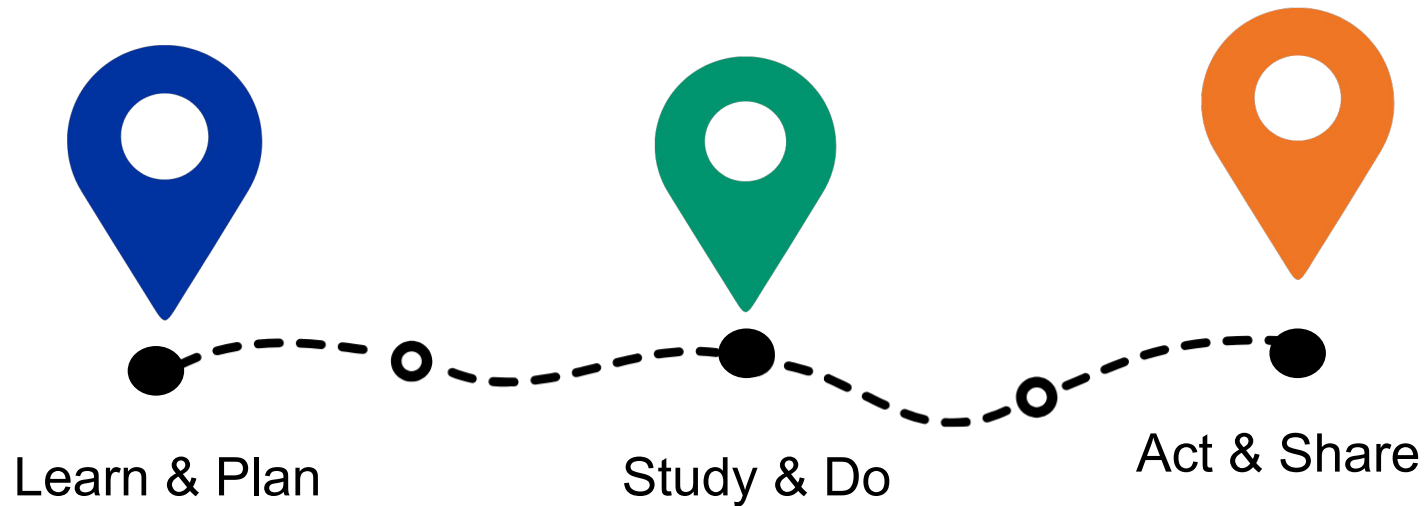
Set goals and plan

Journeying through the Learning Cycle

30:00

For each phase,

1. Analyze the teacher artifact(s) and discuss the questions on the card.
2. Use your note-catcher to capture anything you'd like to discuss and/or bring back to your school.

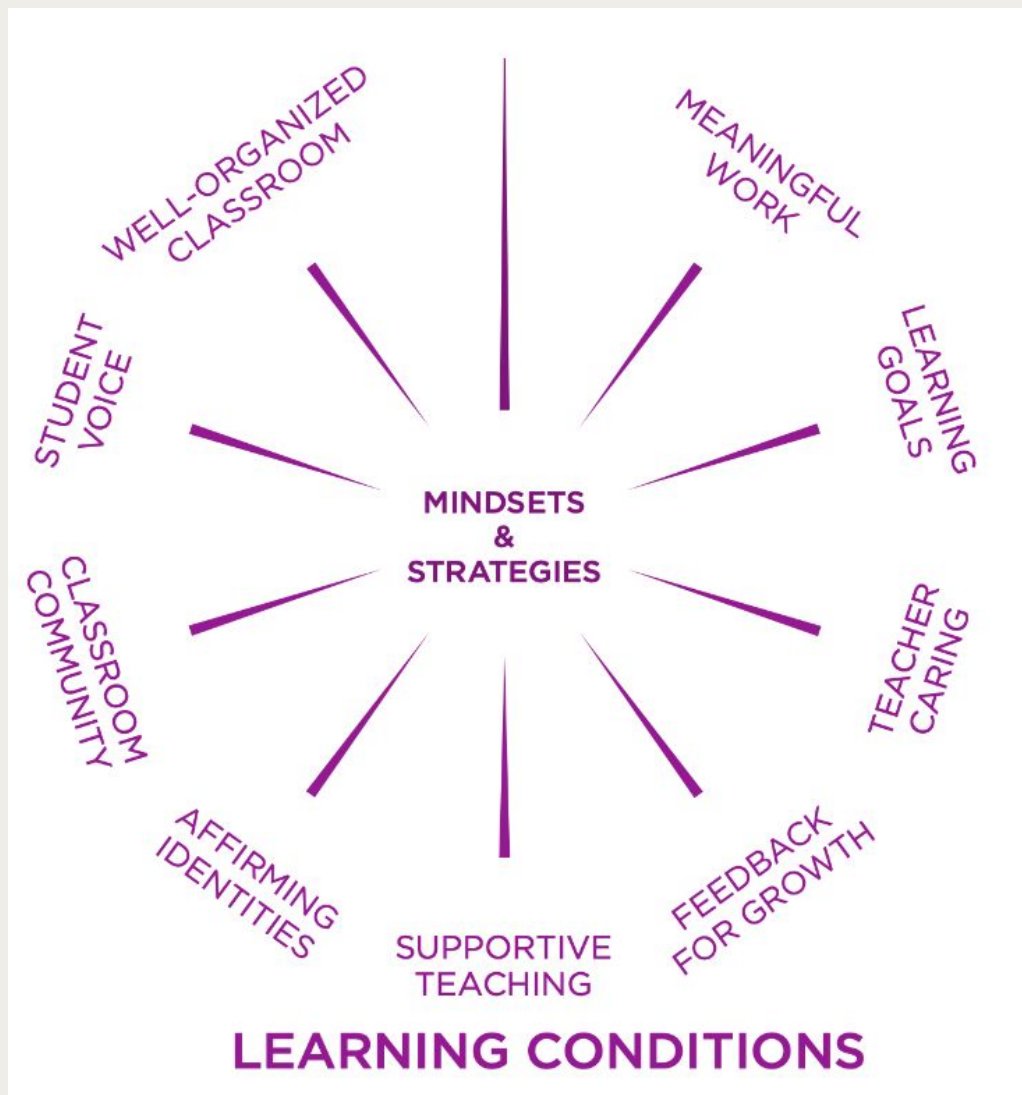


Cultivating the Conditions for Student Sensemaking:
Tools for Reflective Practice
Journeying through the Learning Cycle Note-Catcher
Thursday, November 7, 2024

Focal Teacher: _____
Learning Condition: _____

Phases	<ul style="list-style-type: none">• How is this teacher cultivating their learning condition?• What are some potential next steps?• What areas of growth are you noticing?
Phase 1: Learn and Plan	
Phase 2: Study and Do	
Phase 3: Act and Share	

Additional Comments and Questions:



Debriefing the Learning Conditions

- How does focusing on these learning conditions help us create classroom environments that support students' sensemaking?
- How does this mirror your own practice? What new ideas did you gain?

Debriefing the Learning Cycle

- How does focusing on these learning conditions help us create classroom environments that support students' sensemaking?
- How does this mirror your own practice? What new ideas did you gain?



Closing & Exit Slip

PollEv.com
/sarahstults534



Website: www.luc.edu/csme/

Thank you!



<https://bit.ly/learningconditions>

Scan here to access our session materials.

Contact Us!



Kayla Cherry

Science Instructional Coach

kcherry@luc.edu



Sarah Stults

Science Instructional Coach

sstults@luc.edu



LOYOLA
UNIVERSITY CHICAGO